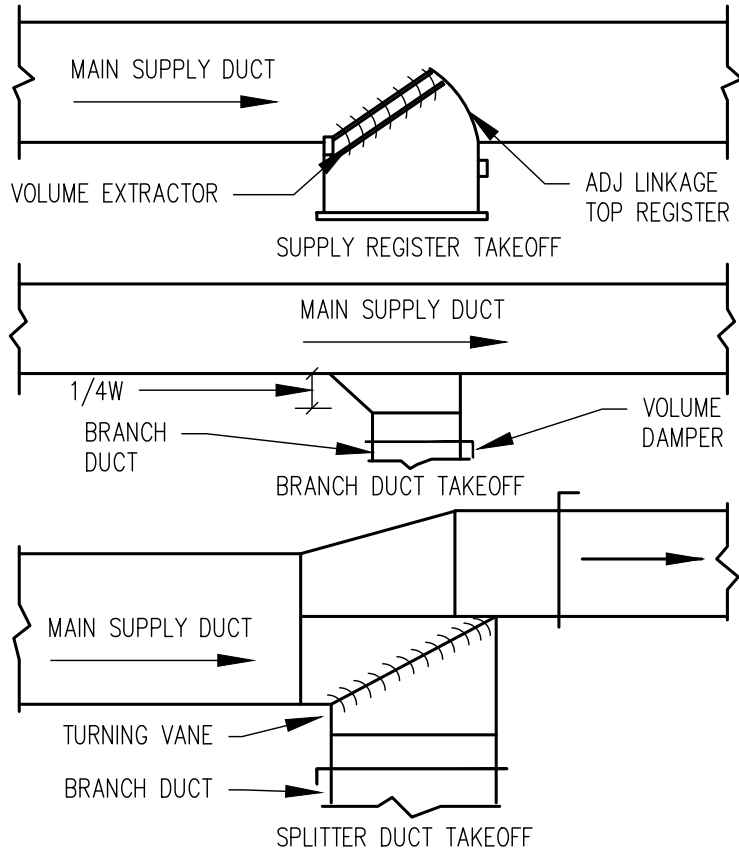
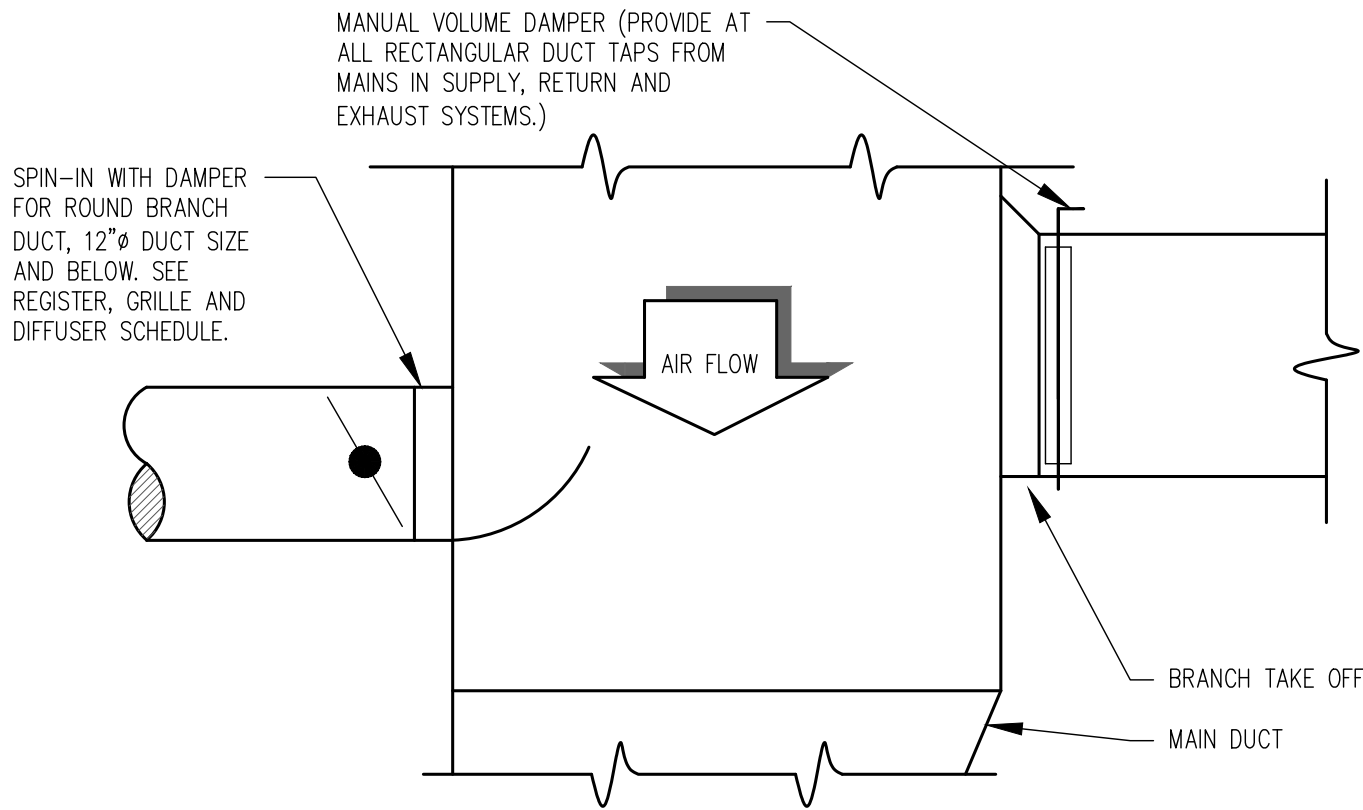


HANGER SIZES FOR RECTANGULAR DUCT				
LONGEST DIMENSION OF DUCT	ROD HANGERS	STRAP HANGERS	TRAPEZE SHELF HANGERS	MAXIMUM SPACING
UP TO 18"	8 GA. WIRE	1"x22 GAUGE	1"x1"x1/8"	10'-0"
19" THRU 30"	8 GA. WIRE	1"x22 GAUGE	1"x1"x1/8"	10'-0"
31" THRU 42"	3/8" ROD	1"x18 GAUGE	1-1/2"x1-1/2"x1/8"	10'-0"
43" THRU 60"	3/8" ROD	1"x18 GAUGE	1-1/2"x1-1/2"x1/8"	10'-0"
61" THRU 84"	3/8" ROD	1"x18 GAUGE	2"x2"x1/8"	8'-0"
85" THRU 96"	3/8" ROD	1"x18 GAUGE	2"x2"x3/16"	8'-0"
97" THRU 120"	3/8" ROD	1"x18 GAUGE	2"x2"x1/4"	8'-0"

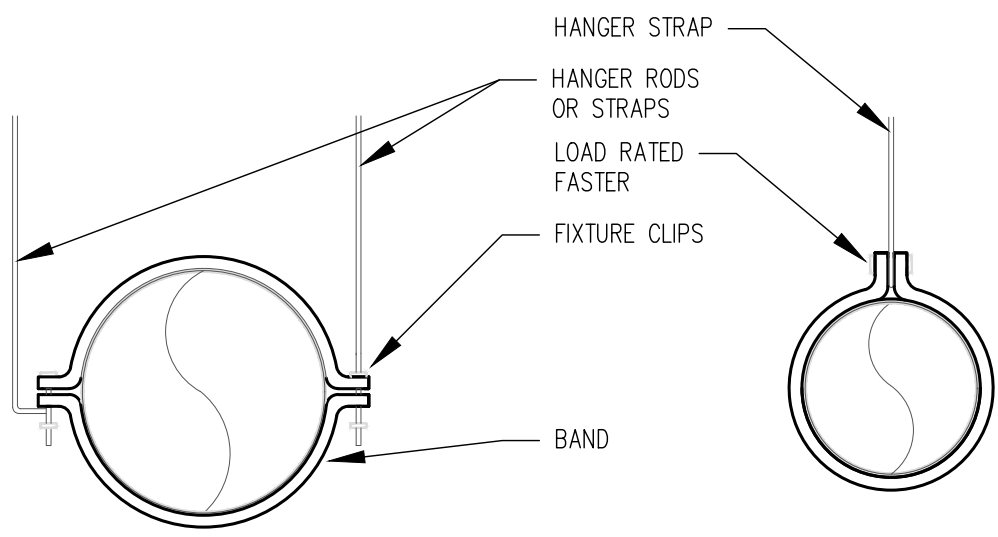
16 RECTANGULAR DUCT HANGERS DETAIL
SCALE: N.T.S.



17 SUPPLY DUCTS TAKEOFF DETAIL
SCALE: N.T.S.

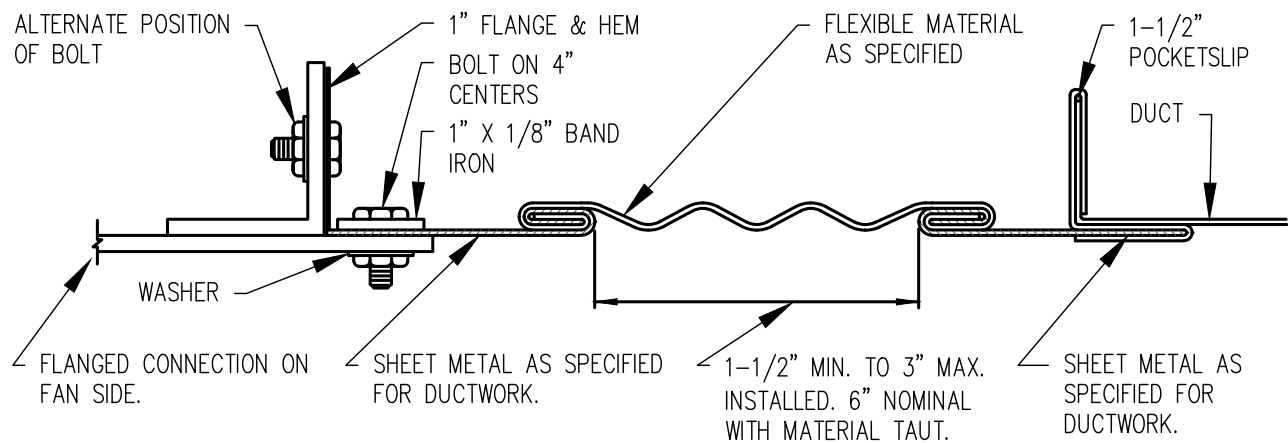


18 LOW PRESSURE DUCT
BRANCH TAKE- OFF DETAIL
SCALE: N.T.S.

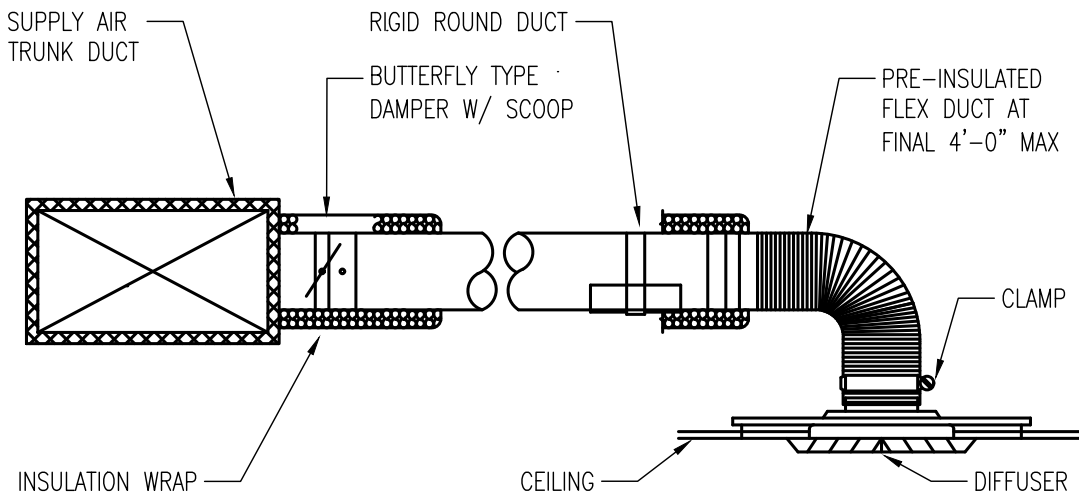


HANGER SIZES FOR ROUND DUCT					
LONGEST DIMENSION OF DUCT	ROD HANGERS	STRAP HANGERS	MAXIMUM SPACING	HANGER ROD	NUMBER OF HANGERS
UP TO 10"	12 GA. WIRE	1"x22 GAUGE	10'-0"	1/4"	1
11" THRU 18"	12 GA. WIRE	1"x22 GAUGE	10'-0"	1/4"	1
19" THRU 24"	---	1"x22 GAUGE	10'-0"	1/4"	1
25" THRU 36"	---	1"x20 GAUGE	10'-0"	3/8"	1
31" THRU 50"	---	2"x20 GAUGE	10'-0"	3/8"	2
51" THRU 84"	---	2"x16 GAUGE	10'-0"	3/8"	2

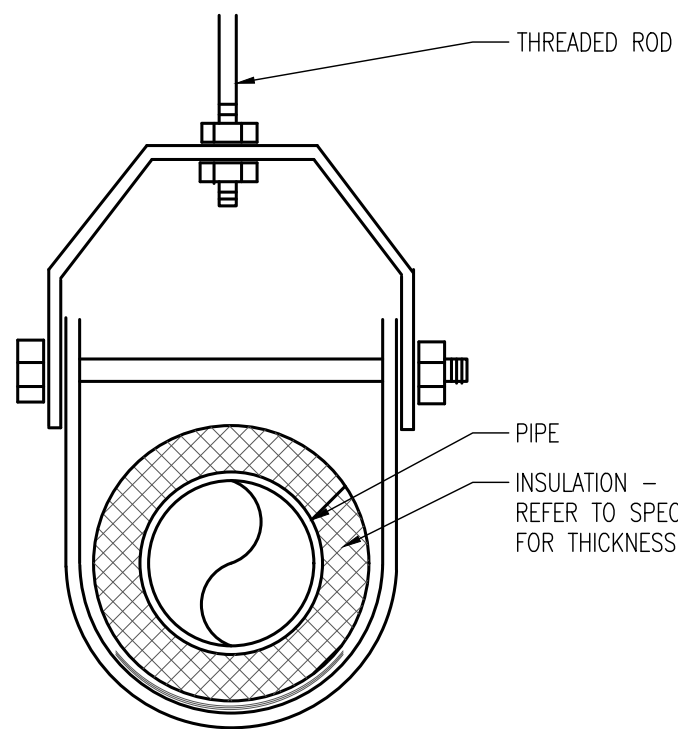
19 ROUND DUCT HANGERS DETAIL
SCALE: N.T.S.



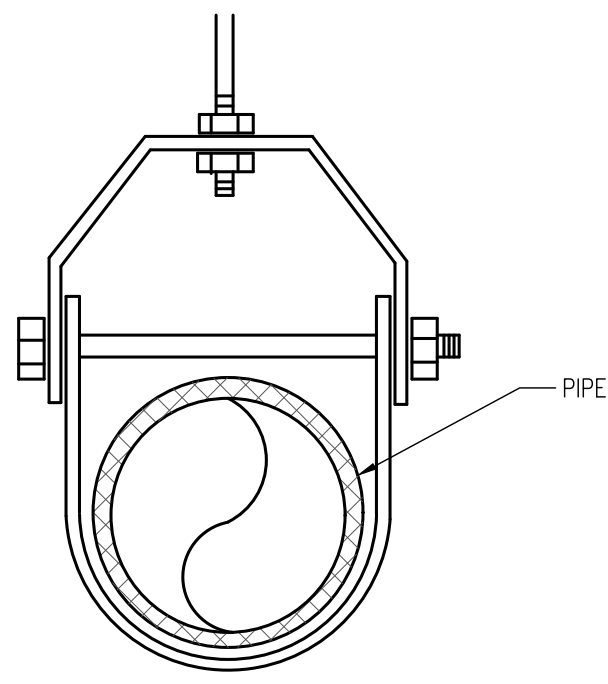
20 RECTANGULAR DUCT FLEX CONNECTION
SCALE: N.T.S.



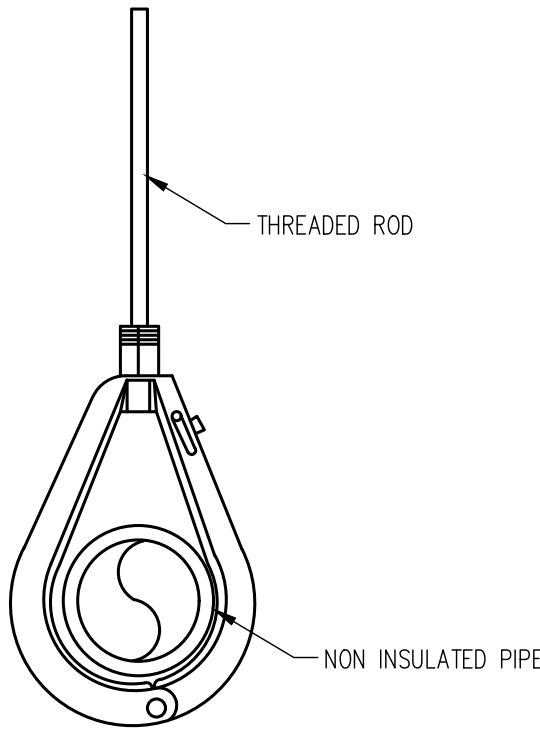
21 DIFFUSER/DUCT INSTALLATION DETAIL
SCALE: N.T.S.



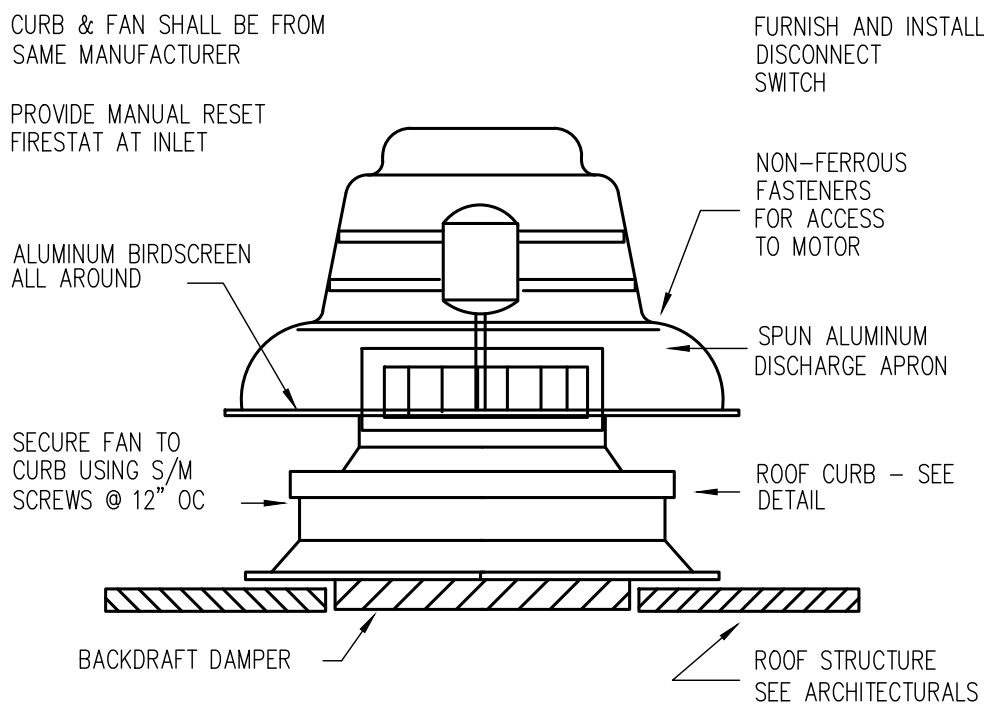
22 PIPE HANGER (CLEVIS) INSULATED
SCALE: N.T.S.



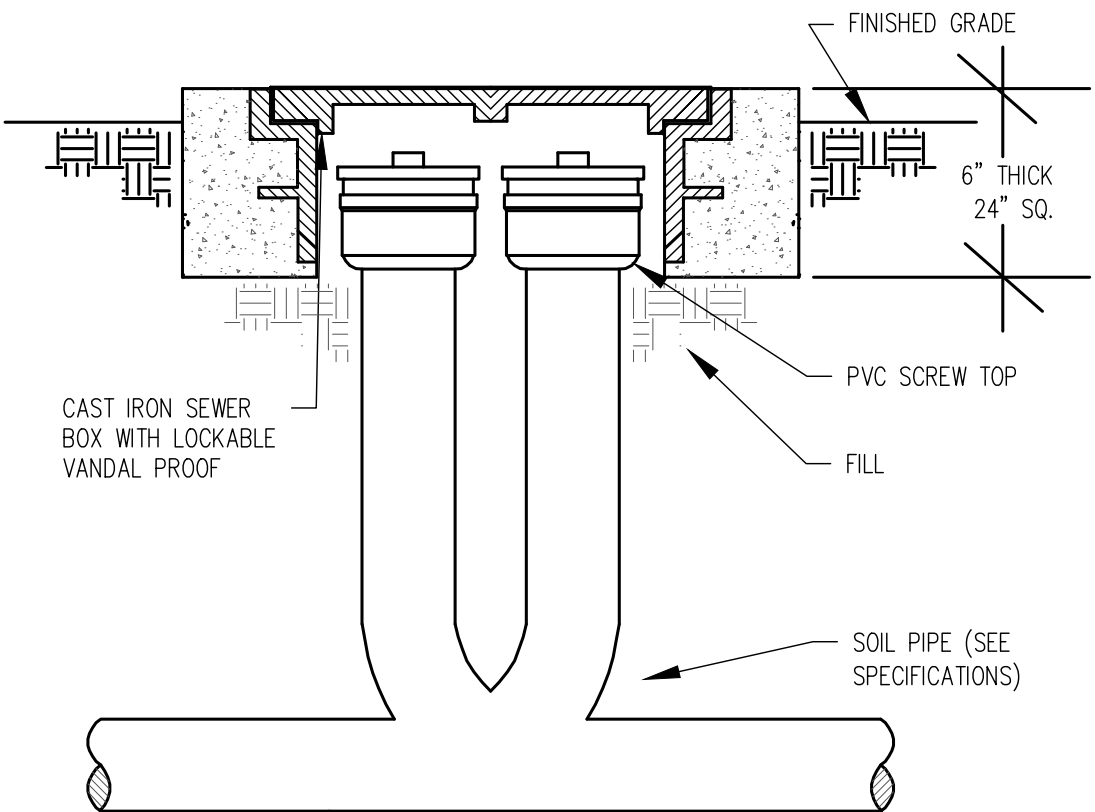
23 PIPE HANGER (CLEVIS) NON INSULATED
SCALE: N.T.S.



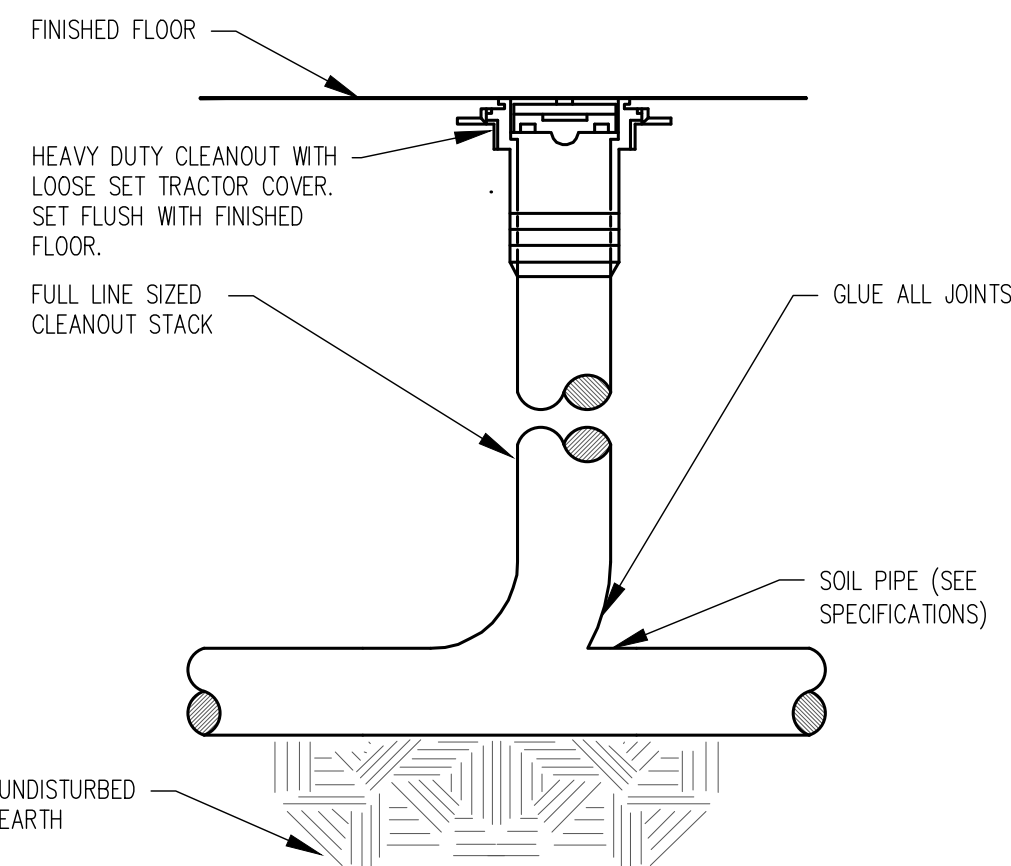
24 PIPE HANGER (SPLIT RING) NON INSULATED
SCALE: N.T.S.



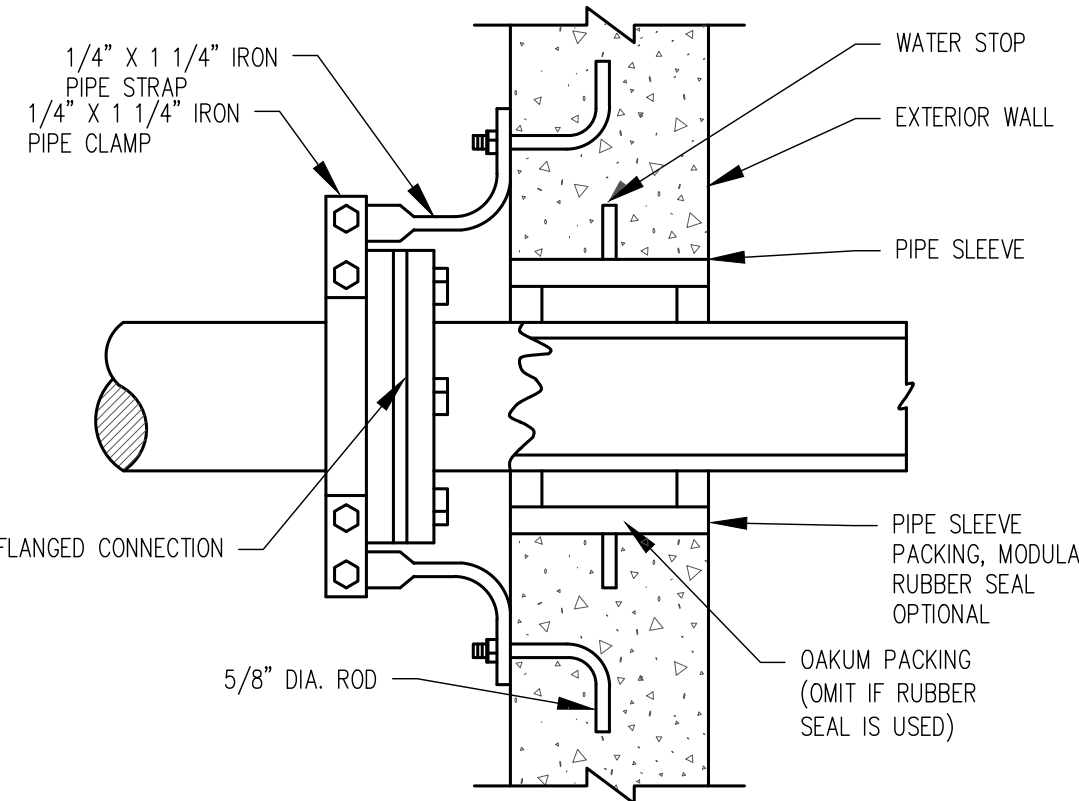
25 ROOF MOUNTED EXHAUST FAN DETAIL
N.T.S.



26 EXTERIOR TWO-WAY CLEAN OUT
SCALE: N.T.S.



27 INTERIOR CLEANOUT DETAIL
SCALE: N.T.S.



28 ANCHOR DETAIL FOR WATER /
NATURAL GAS PIPES THRU WALLS
SCALE: N.T.S.

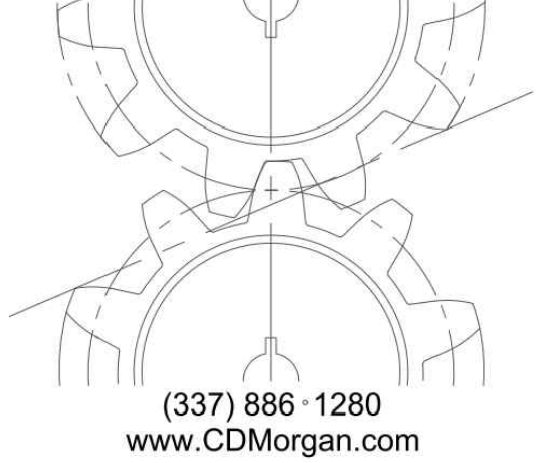


Office of the State
Public Defender
District 8
Office Building

111 West Main Street
Winnfield, LA 71483

CDMorgan

& ASSOCIATES, INC.
ENGINEERING CONSULTANTS
A PROFESSIONAL ENGINEERING AND ARCHITECTURAL
CORPORATION
LOUISIANA



(337) 886-1280
www.CDMorgan.com



Seal:

May 15, 2026
Construction Documents

No.	Description	Date

KEY PLAN

MECHANICAL DETAILS

Project No.: BL0001-25 Drawn By: TWN

M4

OSPD

Sheet No.: